



Dear Parents/ Carers,

This week, we gathered together to reflect on how Jesus was moved with compassion for those who were worried and seeking help. We explored how He sent His disciples out to care for others, and how He calls on us to continue that important work today.

The children spent time thinking about ways they can support those in need.

A big thank you to Mrs O'Halloran for leading our celebration this week.

### **Year 1 trip to Cockfields Farm:**

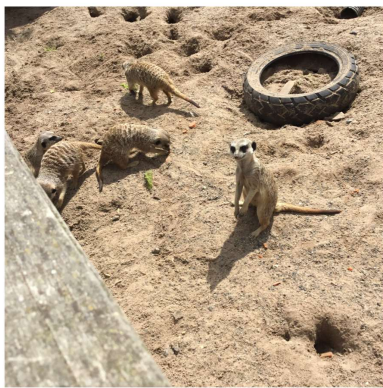
Year 1 went on a school trip to Cockfield's Farm on Tuesday. There was so much to see and do, The children were very brave in the reptile house when the children met Bob the snake! They also made bird feeders, petted rabbits and guinea pigs, fed some very hungry goats, sheep and llamas, went on a tractor ride where they saw some highland cows and their little calf.

The staff at the farm commented on how well behaved our children were and our Year 1 staff were immensely proud of them all.

The sun came out too which was an added bonus!

A huge thankyou to Year 1 staff for organising this trip and to all of our helpers who came along.





## Year 2 trip to Zion Arts



On Wednesday, Year 2 went on an exciting adventure to Wonderland! The children had a brilliant time exploring, playing and searching for the Cheshire Cat. They also took part in an art workshop, went to story time in the library and were given an activity workbook to bring home. All the children behaved beautifully and represented our school wonderfully. A big thankyou to the Year 2 staff and all of the adults who came along on the day and helped to make this trip possible.

### **Year 2 Sport's Day:**

Our Year 2 children were absolutely incredible today, shining brightest when working as a team and cheering on their friends. We couldn't be prouder of them!

A huge thank you to Mr. Helsby and Year 2 for organising such a fantastic event and to all of our wonderful families for coming out to show their support.



### **Considerate Parking:**

Unfortunately, we have received further complaints this week from local residents regarding cars blocking driveways during drop-off and pick-up times.

We kindly ask all parents and carers to be respectful and considerate of our neighbours when parking around the school site. Maintaining a good relationship with our local community is incredibly important to us.

A huge thank you to the many parents and carers who always park safely and considerately—your cooperation is greatly appreciated.

### **PSA News:**

#### **Summer Fair Countdown!**

The Summer Fair is fast approaching, and we still have a few slots open for class stalls. If your class hasn't signed up yet, please consider running a stall to help make the evening a success. We still have three Infant classes yet to sign up.

#### **Donations Needed:**

- **Bottles:** We are still gratefully accepting bottle donations for the tombola.
- **Next Week:** Please start bringing in any second-hand toys and books in good condition.

Thank you so much for your continued support.

### **50/50 Club Winners**

A huge thank you to everyone who has continued to support the PSA 50/50 - every donation made is hugely appreciated across both schools.

We are delighted to announce the following winners for April & May:

#### **April**

1st CM Barrie £45.46  
2nd Bernie Bibi £27.29  
3rd Eileen Belt £18.18

#### **May**

1st Lorna Gooch £45.46  
2nd Kieran Ginty £27.29  
3rd Julie Mellor £18.18

### **Reminders:**

#### **Forest School:**

Friday 26<sup>th</sup> June: No Forest School

Wishing you all a lovely weekend

Mrs Glynn

[headteacher@cheadle-inf.stockport.sch.uk](mailto:headteacher@cheadle-inf.stockport.sch.uk)

Tel: 4858733

**Congratulations to our new Stars of the Week:**

**Nursery:** Frankie & Eddie

**R1:** Gabe & Winnie

**R2:** Ada & Alexander

**RN3:** Elsie & Luca

**1O:** Rafferty & Rudolph

**1BW:** Isla Hooley & Max

**1DW:** Athena & Lucas M

**2L:** Ava & John

**2W:** Olivia & Juba

**2N:** Zach & Lola

**Diary Dates...**

<b>Week beginning 22<sup>nd</sup> June</b>	<b>Second hand books/cuddly toys/raffle prizes</b>
<b>Tuesday 23<sup>rd</sup> June</b>	Class photographs
<b>Wednesday 24<sup>th</sup> June: 9.30-10.30am</b>	Reception Sport's Morning
<b>Friday 26<sup>th</sup> June: 4-6.30pm</b>	Summer Fair
<b>Tuesday 30<sup>th</sup> June</b>	Nursery trip to Reddish Vale Farm (Details on Parent Pay).
<b>Wednesday 1<sup>st</sup> July: 9.30am-10.30am</b>	Nursery Sport's Morning
<b>Friday 3<sup>rd</sup> July: 1-2pm</b>	Forest School Stay & Play for child minders & prospective parents
<b>Wednesday 8<sup>th</sup> July 9.30am-10.30am</b>	Year 1 Sport's Morning
<b>Tuesday 14<sup>th</sup> July: 9.30am</b>	Class 2L End of Year Assembly
<b>Wednesday 15<sup>th</sup> July: 9.30am</b>	Nursery End of Year Assembly
<b>Thursday 16<sup>th</sup> July: 9.30am</b>	Class 2N End of Year Assembly
<b>Friday 17<sup>th</sup> July: 9.30am</b>	Class 2W End of Year Assembly
<b>Tuesday 21<sup>st</sup> July: 3.30-4.30pm</b>	Year 2 Disco
<b>Wednesday 22<sup>nd</sup> July</b>	<b>School Closes for the Summer</b>

